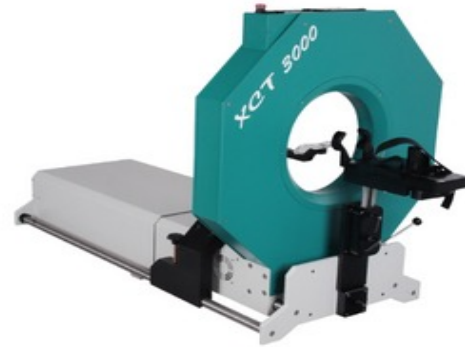


XCT 3000

Peripheral quantitative computed tomograph (pQCT) for the measurement at femur, radius or tibia. Evaluation of volumetric bone density, bone geometry and muscle parameter at the forearm, upper or lower leg using pQCT.



| TECHNICAL DATA | |
|---------------------------------|------------------------------------|
| Type number | |
| Classification | Human |
| Dimensions (l/w/h) | 50 x 29 x 36 in |
| Weight | 198 lbs |
| Numbers of detectors | 12 |
| CT Collimator | 0.7x4 |
| Angle between detectors | 1° |
| Number of projections per block | 180 |
| Number of blocks | 1 |
| Spot size | 50 μ |
| Filter | 355 μ Cu |
| Source collimation | 0.4x0.7 |
| Slice thickness | 2.0 mm |
| Measurement diameter | 10.6 in |
| Voxel size | 0.2–1.0 mm |
| HV | 59-61 kV |
| Nom. HV | 60 kV |
| Anode current | < 400 μ A |
| Nom. current | 200 μ A |
| Gantry opening | 11.8 in |
| Max. way of travel | 15.7 in |
| Radiation dose CT | < 0.001 mSV |
| Radiation dose CV | < 0.001 mSV |
| Scan time | 90 s |
| Option and accessories | Tibia/ Radius Holder, Lifter Table |

Contact us for your personalized service, training and pricing.