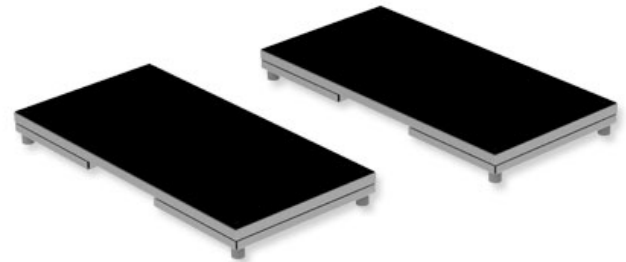


Leonardo Mechanograph[®] GRFP PRO

The standard model for sports and research.

Flexible and mobile version for use in sports, research and advanced users. Dynamic measurement of ground reaction forces with respect to spatial resolution. Easy to use and to instruct, fast application and at the same time high reproducibility due to the utilised everyday motions. Applicable in any age group (reference data from 3 to 99 years included). Typical measurement duration about 1 minute per test (about 3 minutes for standard functional assessment consisting of 4 tests). The test procedures include different jumps for the analysis of individual anaerobic peak power, maximum voluntary muscular force and movement asymmetries. The 2-platform design also allows to place the two force plates at a distance e.g. for wide push-ups or for force Monitoring during weight lifting. Various balance tests are supported. The split platform allows a quantification of asymmetries of physiological movements. Included in delivery are the measurement platform Leonardo Mechanograph GRFP PRO and the analysis software Leonardo Mechanography BAS. Optionally available are grip-force sensor, Frame and a measurement PC or laptop with software preinstalled.



TECHNICAL DATA	
Type number	9N60070000
Classification	Human
Training area dimensions (l/w/h)	(2x) 13 x 26 x 2.8 in
Overall dimensions (l/w/h)	26 x 26 x 3 in
Weight of device	33 lbs
Total weight	66 lbs
Force sensors	(2x) 4
Sampling rate per sensor	bis zu/up to 2000 Hz
ADC resolution	16 bit
Max. force per sensor	ca. 2 kN
PC Interface	USB 2.0, USB 3.0
Separated platform	Yes
Option and accessories	GRFP PRO Frame/ Kiosk Edition/ RES Edition Options

Contact us for your personalized service, training and pricing.